



DOG ON A LOG Books PRINTABLE KEYWORD TABLES

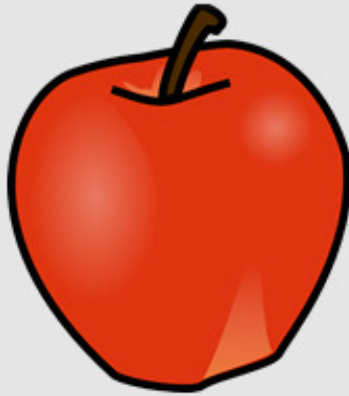
Copyright ©2018 By Pamela Brookes
All Rights Reserved.
For information, contact the publisher at
jojobapress@gmail.com

Public Domain images from www.clker.com

www.dogonalogbooks.com

Alphabet

Aa



apple

Bb



bat

Cc



cat

Dd



dog

Ee



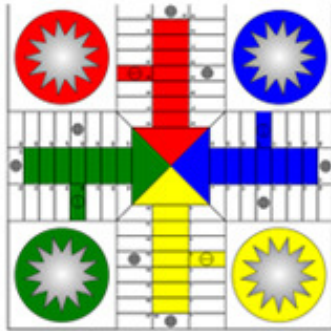
Ed

Ff



fun

Gg



game

Hh



hat

Ii



itch

Jj



jug

Kk



kite

Ll



lamp

Mm



man

Nn



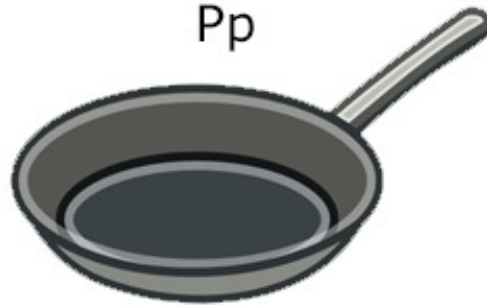
nut

Oo



octopus

Pp



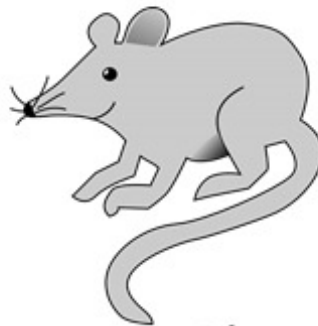
pan

Qu qu



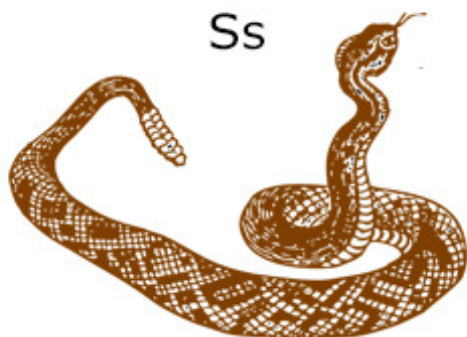
queen

Rr



rat

Ss



snake

Tt



top

Uu



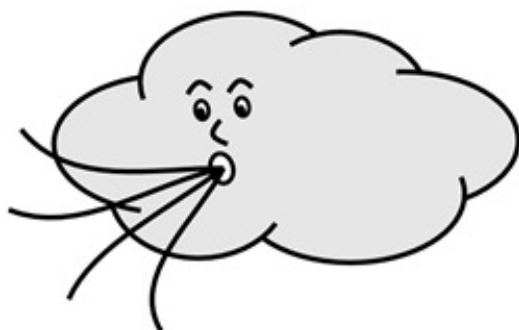
up

Vv



van

Ww



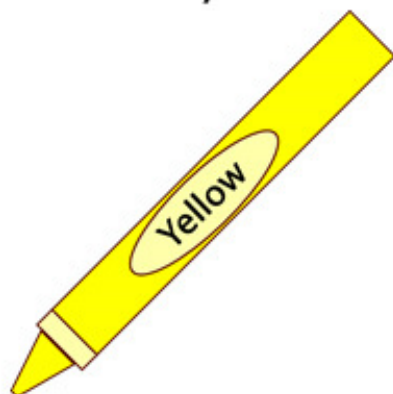
wind

Xx



fox

Yy



yellow

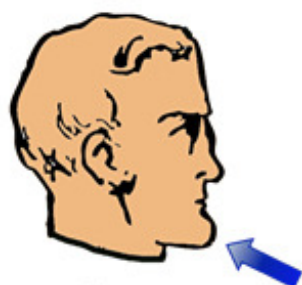
Zz



zebra

Digraphs

ch



chin

sh



ship

th



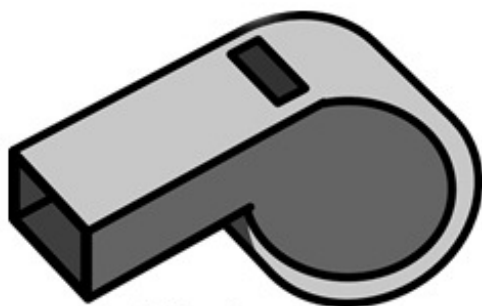
thumb

th



mother

wh



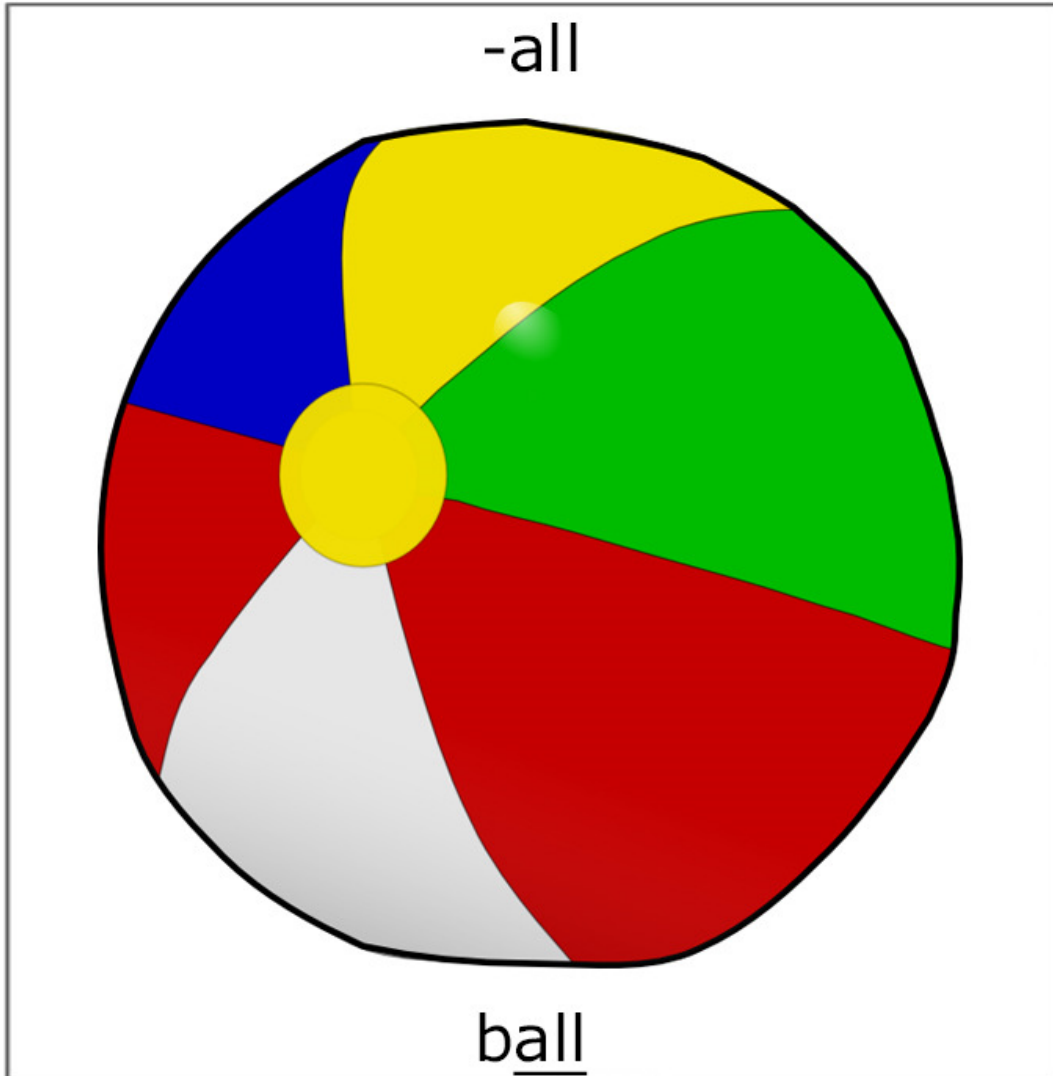
whistle

-ck



sock

all



-ng

ang



fang

ing



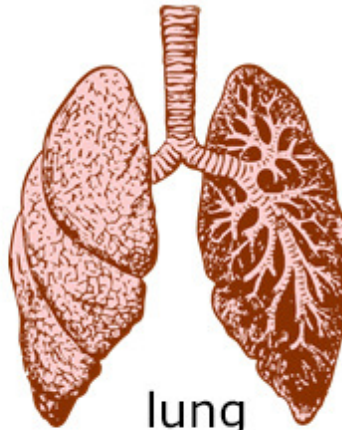
ring

ong



song

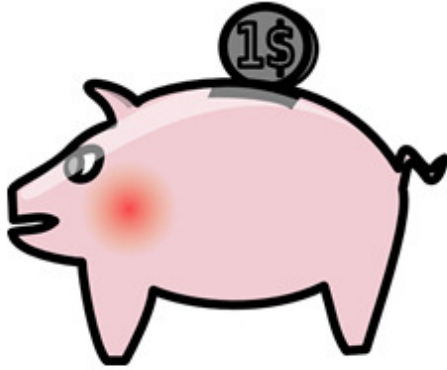
ung



lung

-nk

ank



bank

ink



pink

onk



honk

unk



junk

ild, ind, old, olt, ost

ild



wild

ind



kind

old



cold

olt



colt

ost



host

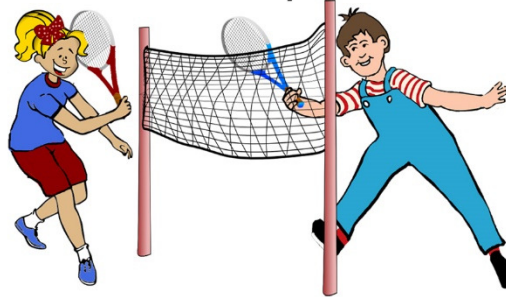
ai, ay, ea, ee, oa

ai



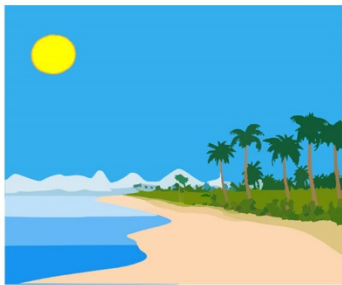
rain

ay



play

ea



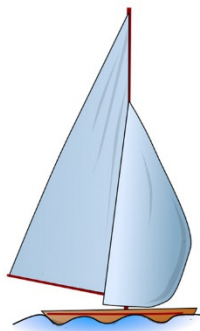
beach

ee



tree

oa



boat